

Celebrating 30 Years

RD Williams

Excavator Parts



RD Williams

Excavator Parts



Two of the original six excavators bought to start the company in August of 1993.

1993

1997

By 1997, we were wrecking one excavator per week!



Originally, the business was 100% used parts. Machines were dismantled, components were rebuilt and stored in containers until warehouses and workshops were built.

As the business grew, we were constantly sourcing components and parts from overseas suppliers, now from all around the world!



13/8/1995



Machine :
Atlas Excavator

Sold by Rod Williams
when New!
Purchased back for dismantling.



Pictured :
Kato HD1220SE Excavator
with GP Bucket.

One of the machines
purchased from Perth.

Rod Williams had a vision to not only sell customers their machine but to build a company that could support them also with reliable parts and a service backup system. As new parts were scarce and very expensive and Excavators were “the new thing”, RDW Excavator Parts was started in August 1993 to service the industry.



Link Belt Excavator photographed on site



Quality Machines



Machinery Support



Specialist Equipment

2000

Rod's contacts in the new dealer network gave us a regular supply of used machines for dismantling and we would regularly get packets of photos and a machine report from anywhere in Australia.

We would appraise from this or if close by an inspection of the machine by Rod or Ian would suffice.

We purchased from as far away as Perth.

BEST TRACTOR PARTS
 Specialising in Spare Parts for Caterpillar & Komatsu Machinery PTY LTD

Brian Murphy
 Specialising in Spare Parts for
 Caterpillar & Komatsu Machinery

Lot 5 Stirling Cres.
 Hazelmere WA 6055
 PO Box 215, Guildford
 Western Australia 6935

International: (+618)
 Ph: (08) 9250 336
 Fax: (08) 9250 560
 Mob: 018 507 49

IAN HAM.
 \$16,000 O.A.O.
KEN MONTFORD

**EXCAVATING
 WATER TRUCK**

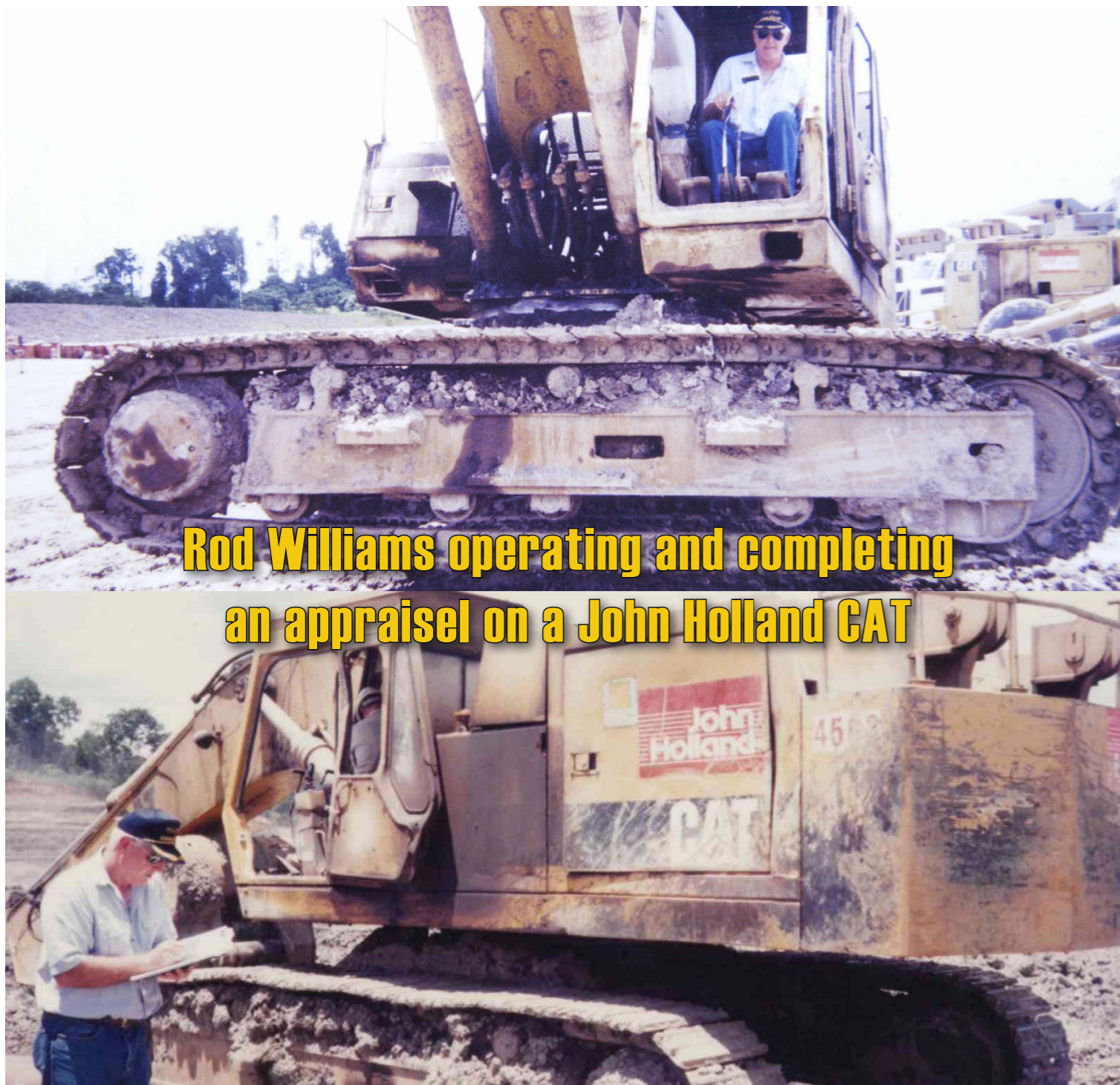
HOURLY HIRE OR CONTRACT

FREE QUOTES PH.018 688328



We bought machines from all types of industries!!

Forestry, Mining, Scrap Dealers, Construction etc.



Rod Williams operating and completing an appraisal on a John Holland CAT



Right:

Rod pictured on a PC650 wrecker - First large wrecker for RDW Excavator Parts!



A Philosophy



Ian, Pilot, Sally, Rod, Korean Suppliers

Ian Ham and Rod Williams pioneered sourcing of new parts from overseas, predominantly Japan and South Korea. We sourced and found suppliers in Asia from an early stage of the company growth.

We are now suppliers of the best quality parts! We've constantly re-invested in our business to keep a sustainable business for the future, through people as well as physical assets.



122 Years of Service to RDW

RDW Excavator Parts would be nothing without its people. Started by Ian Ham, Rod Williams and Dick Karreman in 1993, Darryl, Steven, Joanne and Garry soon strengthened the team.

Friendships and long term customer and supplier relations have been fundamental to our business success. Many people have remained with the business from the early days!



Ian Ham, Don Kim & OER Moon



Suppliers with Ian, Rod & Sally



Ian & Suppliers



1998

As another Australian first, 25 years ago we were building rock saws using modified final drives to sell to the quarrying industry.

We still service these Sandstone Cutting Wheels regularly for original customers!



V Bucket



Large range of buckets Hitachi, Komatsu & CAT



A line of Buckets in the Middle yard

2000

Then:

Attachments have been a part of our business since day dot. Used buckets to compaction wheels and even shovels, we had the complete range.



1.2m wide GP bucket with worn teeth & adaptors



Compaction Wheel



120t GP bucket

2019



Some overseas trips involved visiting manufacturers where the buckets were welded together at suppliers using a shed less than the size of a normal garage – and they were building for OEM's, one bucket at a time!



Korea buying trip late 90's

In the early days, some buying trips involved seeing suppliers with a "container" facility or that simply had a pile of parts on the ground - market style



The Workshop

Our workshop became a specialist repairer of all brands of Excavators. Initially, cabs etc were repaired and panels straightened in house as it was the only option available.



Market Opportunity

Identifying another market opportunity, we sourced new cabs from the factories to reduce costs and get better results with faster turn around times. We have always been proud of high inventory levels to ensure we can meet the needs of the market.



Then: "Knowing what fits what" has always been a key to our Undercarriage expertise.

In another first, RDW Excavator Parts started importing rollers, sprockets, chains and plates, as well as final drives as a better way of extending the economical life of machines. It involved travelling the world to find the factories that manufactured the undercarriage for the OEM's.

Now: Undercarriage is a core part of our business, with substantial investments in track benches, inventory and workshop capability.





We first ventured into Rock breakers 28 years ago through the purchase of some hammers at an auction.

Left: Started Rockbreaker business with a purchase of a PM501 (pictured left from Auction.)

2009

Saw our first acquisition, QLD Rock Breakers, making us one of the main suppliers into the Australian market.

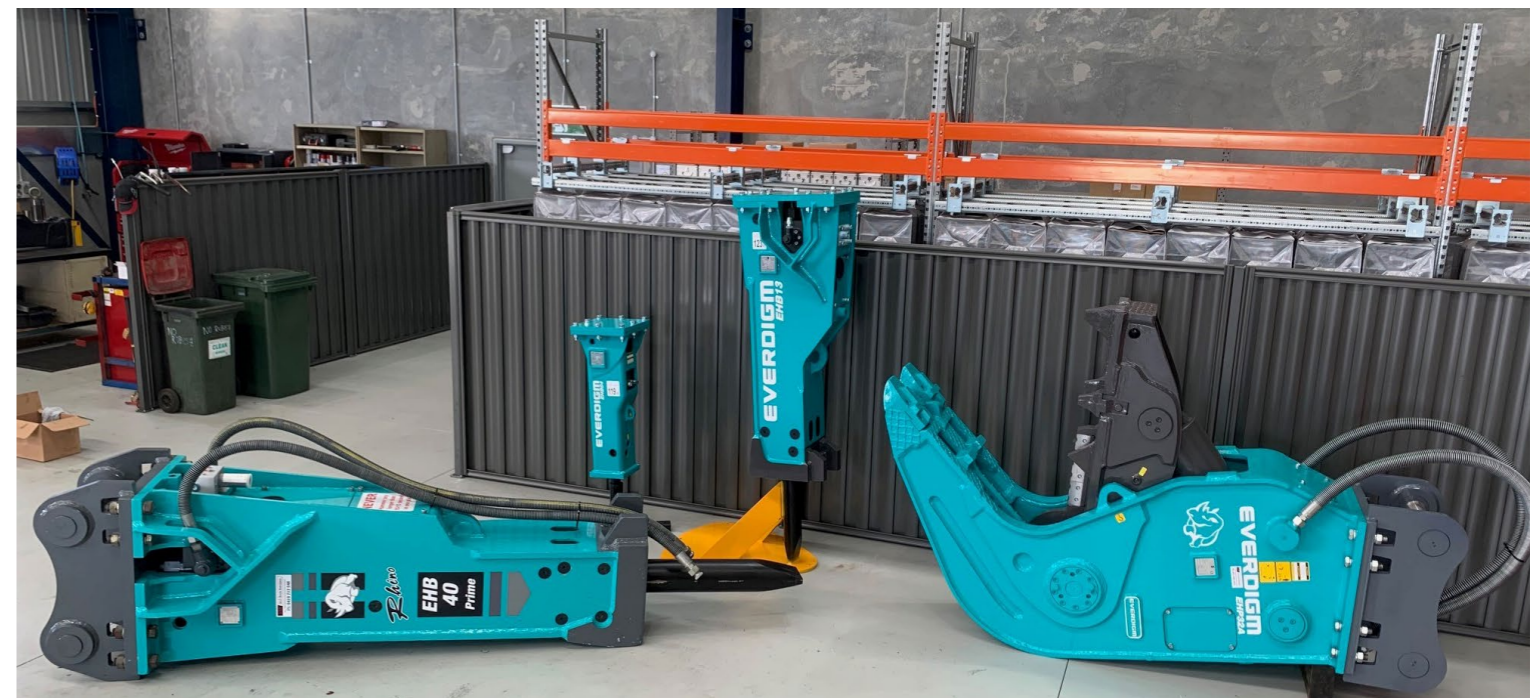
Rock breakers became another leg of our business, becoming one of the first importers into Australia.

QRB has since evolved from just rock breakers to become a hydraulic attachments business. In 2022 we built a new building at 99 Donaldson Rd to continue this expansion.

The business is now the proud Australian importer of leading brands such as Everdigm, Simex and Allu, as well as the QLD/NT dealer for Rammer.



Since the business was started in 1997, QLD Rock Breakers is a leading supplier of rock breakers, associated parts and other specialist attachments.





And the business continues to grow...



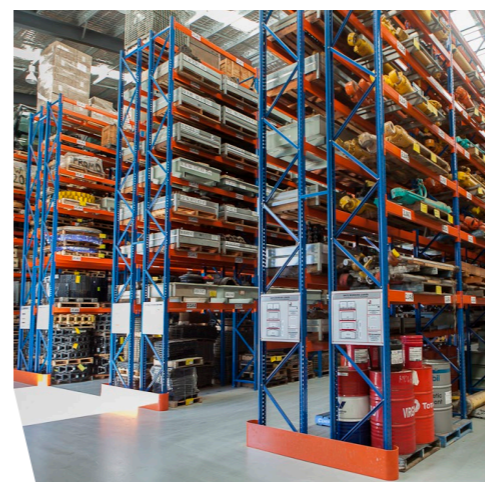
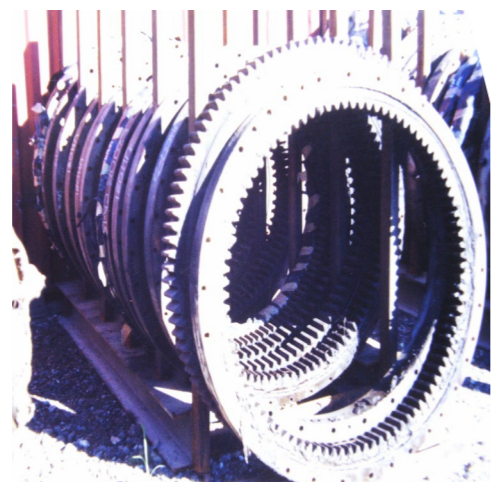


90's



2023

RDW Excavator Parts thanks you for 30 Years of Support



RDW

Excavator Parts

QRB

QLD Rock Breakers

Your Total Earthmoving Equipment Solution

rdw.com.au | exc@rdw.com.au | 07 3715 1800