

# SELF LEVELLING PLANERS

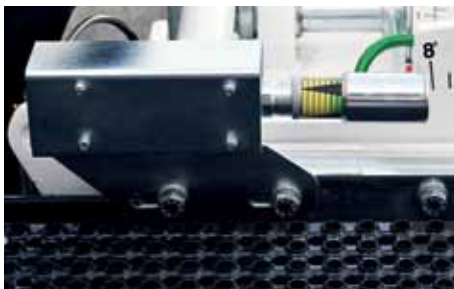
## PERFORMER



**PERFORMER**

SIMEX  
PATENT

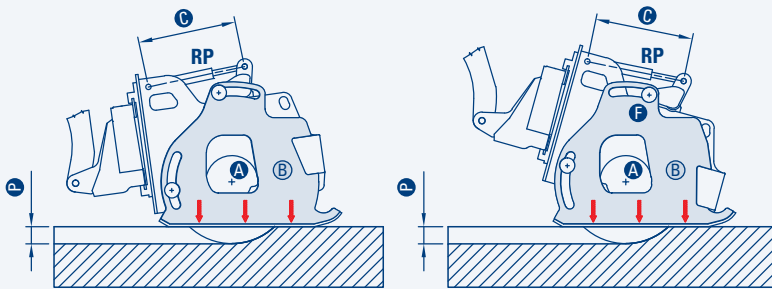
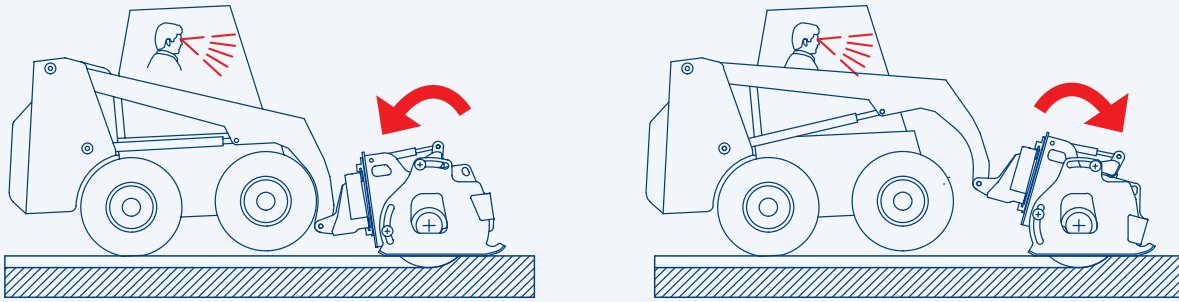
To always use full Simex attachment's power.



High efficiency

Thanks to the piston motors direct driving the cutting drum, the maximum hydraulic and mechanical efficiency is always granted, reducing the oil heating issues.

## HOW IT WORKS



The depth adjuster **RP** (mechanical or hydraulic) moves the fulcrum **F** up and down, determining the working depth **P**. If the planer is not horizontal to the surface, the side **B** rotates forward or rearward comparing to the virtual axis **A**; the lateral skis are this way always adherent to the surface and the working depth **P** stays constant while advancing. The working depth **P** can be modified only by changing the stroke **C** of the depth adjuster **RP**.

## CONSTANT PLANING DEPTH. ALWAYS

Independently from the ground contour, from the position of the planer and from the arms tilt.

## NO MORE VISIBILITY PROBLEMS FOR THE OPERATOR.

The skis automatically aligns to the surface which must be planed. Therefore the operator must not take care of the problems coming from the bad visibility of the working area anymore because he is certain that the planing depth he is getting is exactly and constantly the ones originally set.

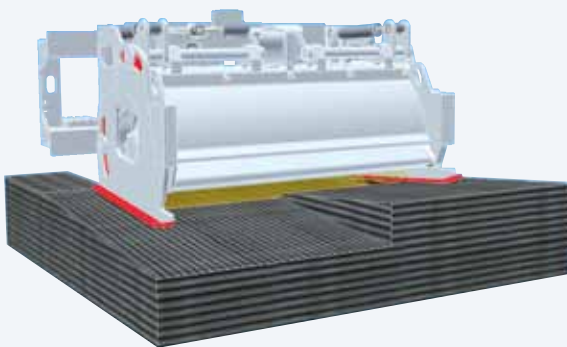
## ADVANTAGES

### INDIPENDENT SLEIGHS

The sleighs move independently one from each other perfectly following the working surface (left and right).

This way the operator can get:

- **MAXIMUM STABILITY AND NO VIBRATIONS**  
The constant and perfect alignment with the surface grants the maximum stability.
- **PERFECT CONTAINING OF THE DUG MATERIAL**  
With the skis always adherent to the surface, the dug material does not get out. No launches.



### INDEPENDENT LEFT AND RIGHT DEPHT ADJUSTMENT

Perfect levelling of the working surface. No steps in case of side passes.

Can be obtained like that:

**PERFECT FLAT SURFACE IN CASE OF SIDE PASSES,**

otherwise  
**POSSIBILITY OF GETTING INCLINED PLANS.**





## SPECIFICATIONS

	STANDARD FLOW PLANERS		HIGH FLOW PLANERS		
	PL 25.10	PL 35.15	PL 40.15	PL 45.20	PL 55.20
<b>Performer</b>	optional	optional	optional	standard	standard
<b>Standard drum</b>					
Width	250	350	400	450	550
Depth	0-70	0-110	0-150	0-150	0-150
<b>Special drums (1)</b>					
Width	25 ÷ 250	30 ÷ 400	30-400	30 ÷ 400	30 ÷ 550
Max. depth	130	150	170	200	200
Self levelling angle	30°	30°	30°	30°	30°
Depth adjustment	independent left and right mechanical or hydraulic*				
Side shift	mech./hydr.*	mech./hydr.*	mech./hydr.*	hydraulic	hydraulic
Tilt	on request	on request	on request	autom./hydraulic	autom./hydraulic
Inclination	-	16° (optional)	16°	16°	16°
<b>Operating weight (2)</b>	350	590-850	660	790(1)-940	840-1050
<b>Required oil flow</b>	30-60	45-75	65-140	65-140	70-140
<b>Required oil pressure (3)</b>	240-160	240-160	240-170	300-160	300-160
Dust prevention water system (optional)	Kit for cab mounting with electro pump or integrated in the side shift fame with electro pump				

(\*) Optionals.

(1) Concerning the planer standard version, without the removal belt.

BUILT-IN WATER TANK WITH PUMP

**SIMEX**  
PATENT



### MULTI-TEETH DRUM FOR FINE MILLING

**Perfect accuracy** thanks to the self levelling system.  
Ideal for line removal e for fine surface finishing.



HIGH POWER PLANERS FOR								
PLANING			SCARIFICATION		HIGH DEPTH			
<b>PL 50.20</b>	<b>PL 60.20</b>	<b>PL 75.20</b>	<b>PL 1000</b>	<b>PL 1200</b>	<b>PL 40.35</b>	<b>PL 60.25</b>	<b>PL 100.25</b>	
standard	standard	standard	standard	standard	standard	standard	standard	
500	600	750	1000	1200	400	600	1000	mm
0-170	0-170	0-170	0-130	0-130	100-350	0-250	0-250	mm
50 ÷ 500	50 ÷ 600	75 ÷ 750	500 ÷ 1000	600 ÷ 1200	250 ÷ 400	75 ÷ 600	1000	mm
230	230	230	130	130	350	250	250	mm
30°	30°	30°	30°	30°	26°	26°	26°	
independent left and right mechanical or hydraulic*								
hydraulic	hydraulic	hydraulic	hydraulic	hydraulic	hydraulic	hydraulic	hydraulic	
autom./hydraulic	autom./hydraulic	autom./hydraulic	autom./hydraulic	autom./hydraulic	autom./hydraulic	autom./hydraulic	autom./hydraulic	
16°	16°	16°	16°	16°	16°	16°	16°	
900-1050	950(1)-1100	1050-1250	1090(1)-1200	1210-1320	1150-1270	1200-1350	1650-1760	kg
90-160	90-160	110-180	95-200	110-200	90-180	90-160	95-200	l/min
300-160	300-160	300-180	350-180	350-180	320-180	300-180	350-180	BAR
Kit for cab mounting with electro pump or integrated in the side shift fame with electro pump								

- (2) User is responsible for ensuring that the equipment meets the prime mover's specifications and weight requirements.
- (3) The pressure must be in inverse relation with the flow rate available and vice versa.